

SDWSN based Location Aware Routing Protocol

Software Recommended: NetSim Standard v13.0 (32-bit/ 64-bit), Visual Studio 2017/2019

Project Download Link:

https://github.com/NetSim-TETCOS/SDWSN-based-Location-Aware-Routing-Protocol_v13_0/archive/refs/heads/main.zip

Follow the instructions specified in the following link to download and setup the Project in NetSim:

<https://support.tetcos.com/en/support/solutions/articles/14000128666-downloading-and-setting-up-netsim-file-exchange-projects>

Location Aware Routing (LAR):

Routing for an ad-hoc wireless network is challenging, many routing strategies have been proposed in the literature. With the availability of affordable Global Position System equipped devices, Location-Aware Routing provides a promising foundation for developing an efficient and practical solution for routing in the ad-hoc wireless network.

Most Forward within Fixed Radius R (MFR):

MFR protocol is a geographic Location-Aware Routing protocol. MFR forwards packets to the neighbour nodes within a set radius of the current node (not the route source) that makes the most forward progress (or the least backward progress) along the line drawn from the current node to the destination. Progress is calculated as the cosine of the distance from the current node to the neighbour node projected back onto the line from the current node to the destination.

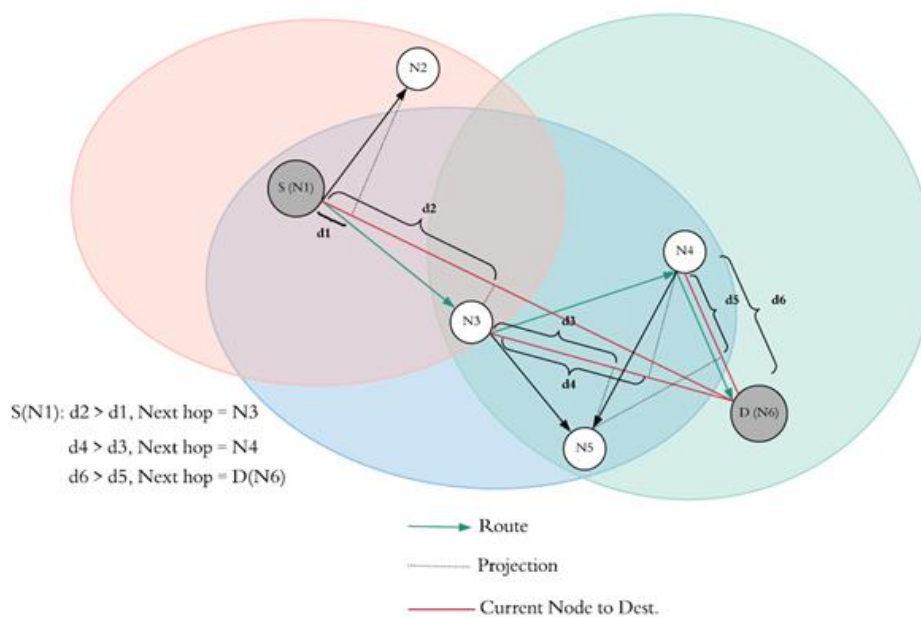


Figure: MFR Protocol Implementation

Here,

- S(N1) is the source node and D(N6) is the destination node.
- N2 and N3 are in the transmission radius of S(N1).
- So, according to MFR protocol, d1 and d2 are the projected distances of N2 and N3 respectively on the line drawn from the current node i.e., S(N1) and the destination node D(N6):
- $d2 > d1$, therefore the next route hop node will be N3.
- N4, N5 and S(N1) are in the transmission radius of N3. Since S (N1) is already present in the route list, skip it.
- So, according to MFR protocol, d3 and d4 are the projected distances of N5 and N4 respectively on the line drawn from the current node i.e., N3 and the destination node D(N6):
- $d4 > d3$, therefore the next route hop node will be N4.
- N5, D(N6) and N3 are in the transmission radius of N3. Since N3 is already present in the route list, skip it.
- So, according to MFR protocol, d5 and d6 are the projected distances of N5 and D(N6) respectively on the line drawn from the current node i.e., N4 and the destination node D(N6):
- $d6 > d5$, therefore the next route hop node will be D(N6).
- Route according to MFR: S(N1) -> N3 -> N4 -> D(N6).

Real Time Interaction in NetSim:

NetSim allows users to interact with the simulation at runtime via a socket or through a file. User Interactions make simulation more realistic by allowing command execution to view/modify certain device parameters during runtime.

Python socket interface:

Python interfacing is a method to interface custom protocols like routing based protocols with the NetSim engine. In this project, we input NetSimCore.exe with routes generated via our routing protocol i.e., Most Forward within Fixed Radius R (MFR) which is a geographic location-aware routing protocol. The interaction between the routing protocol and the NetSimCore.exe is happening via socket programming.

The Real-Time Interaction has to be turned 'True' before running the simulation of the scenario. This lets the NetSimCore.exe (server) to wait for the client (Python script) to connect using the socket port. After the connection is established, we compute the routes based on our custom MFR protocol. These routes are passed as static routes to the NetSimCore.exe server by the python script.

Python Script:

The Socket programming code and MFR protocol code has written only in one separate file (mfrProtocol.py). The protocols are written in a separate script file like here

mfrProtocol.py:

- This python script reads the device coordinate and device ip address input from a file device_log.txt having data in the following format:

```
SINK76.70 76.71 11.1.1.1
```

- The protocol script has 4 functions to ultimately find the projected distance _projDist() on the line drawn from the current node to the destination.
- Mention the device_log.txt file name in the python script at File I/P section: **with open('device_log.txt','r') as f:**
- This python script reads the Application id, Source id and destination id input from a file Appinfo_log.txt having data in the following format:

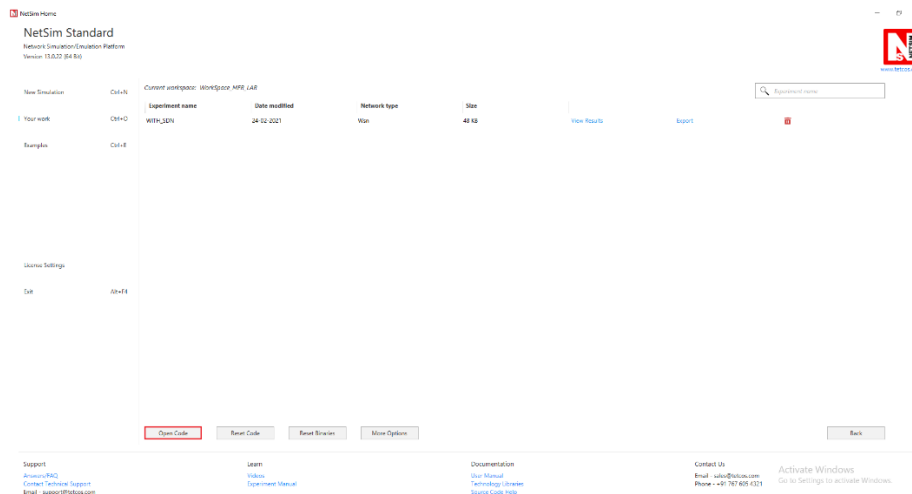
```
1 SENSOR_2 SENSOR_3
```

- Mention the Appinfo_log.txt file name in the python script at File for Appinfo section: **with open('Appinfo_log.txt','r') as f:**
- In the Declarations of MFR, change the Transmission range (meters) accordingly:
 - **Tx = 170**

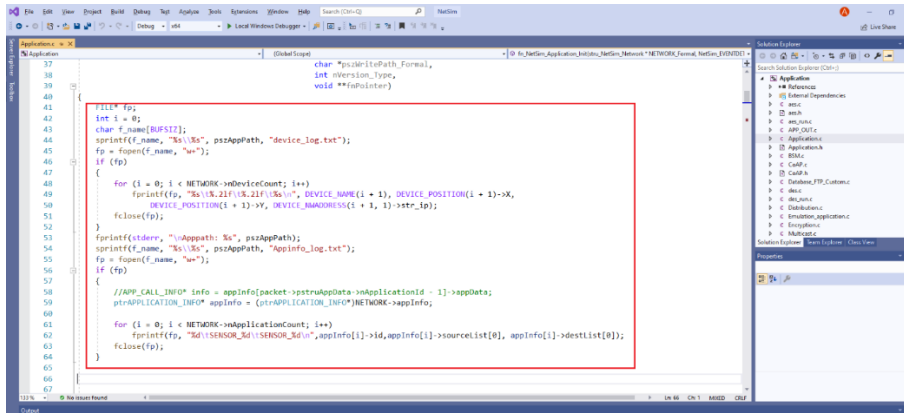
Note: The Transmission range is set to 170 based on the channel conditions and device properties for this example. This may vary if any network other than the one discussed in this example is considered.

Steps:

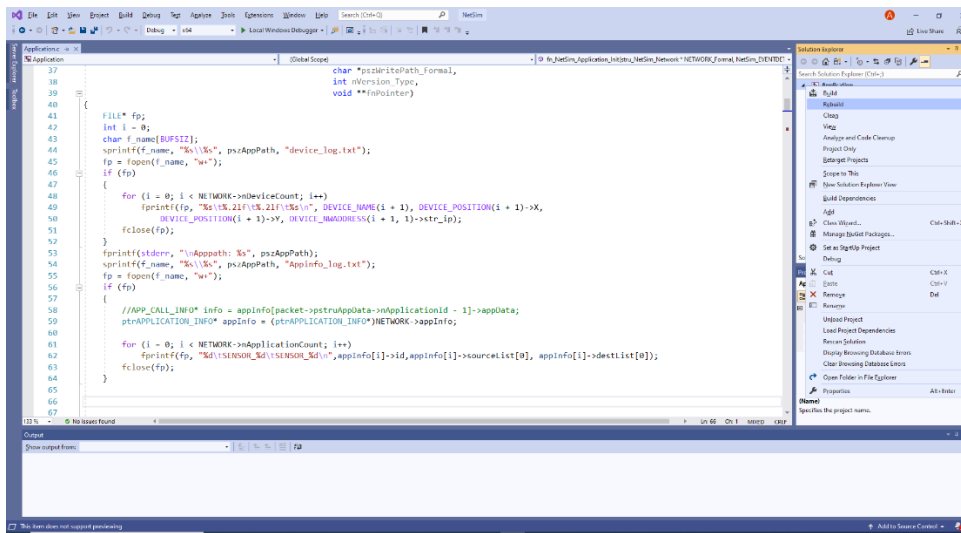
1. Go to home page, Click on **Your work>Workspace options** and click on the **Open code** button.



2. Add the code that is highlighted in Application.c file

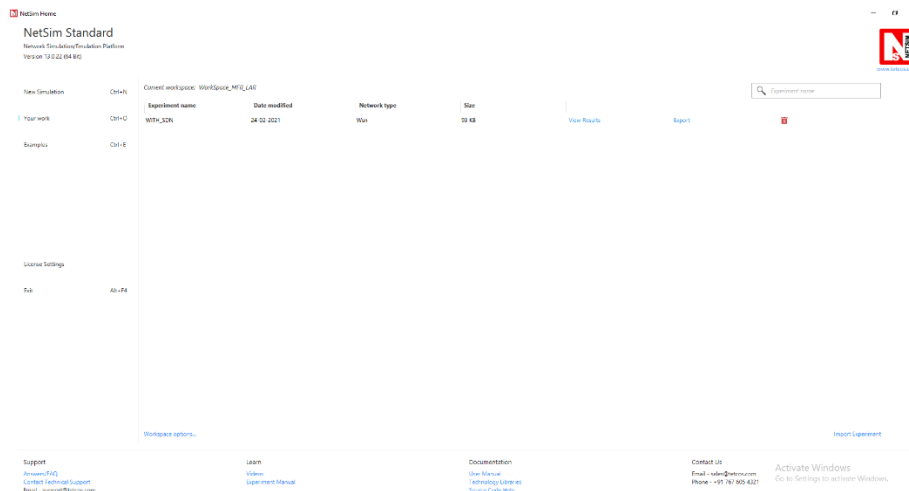


3. Now right click on Solution explorer and select Rebuild.



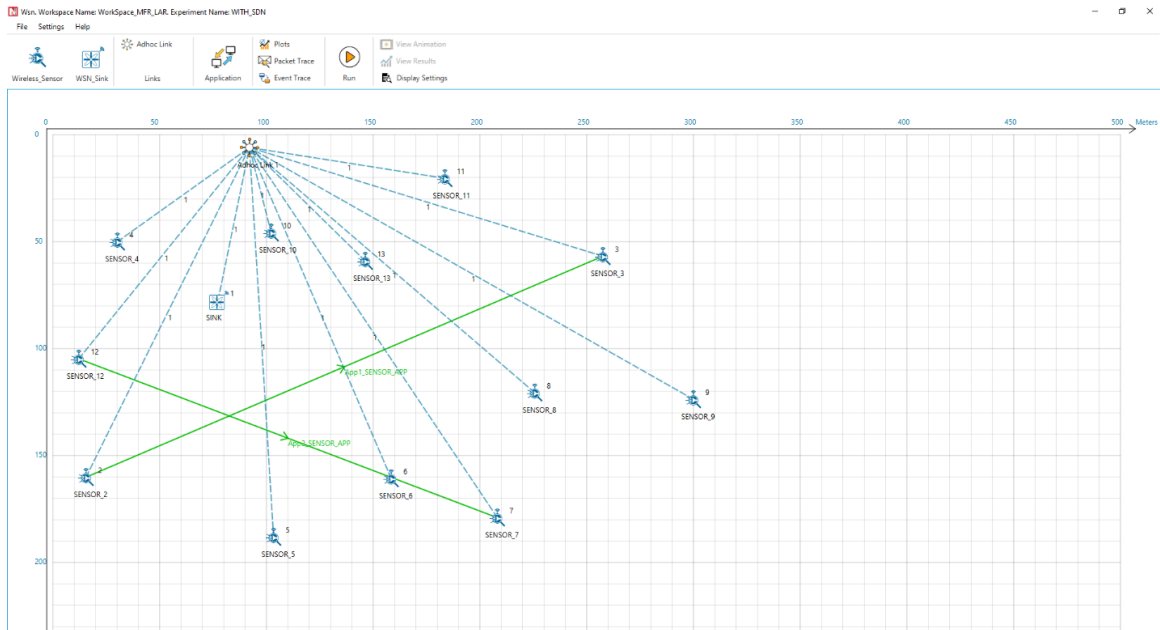
4. Upon rebuilding, **libApplication.dll** will automatically get replaced in the respective bin folders of the current workspace

5. Go to NetSim home page, click on **Your work**, Click on **WITH_SDN**.



Settings that were done to create the network scenario for Location Aware Routing Protocol:

1. Create a network scenario in WSN (**Wireless Sensor Network**) with **UDP** running in the **Transport Layer** and **DSR** in **Network Layer**.
2. For example, you can create a scenario as shown in the following screenshot:



For Application 1:

- Source – Device id 2
- Destination – Device id 3

For Application 2:

- Source – Device id 12
- Destination – Device id 7

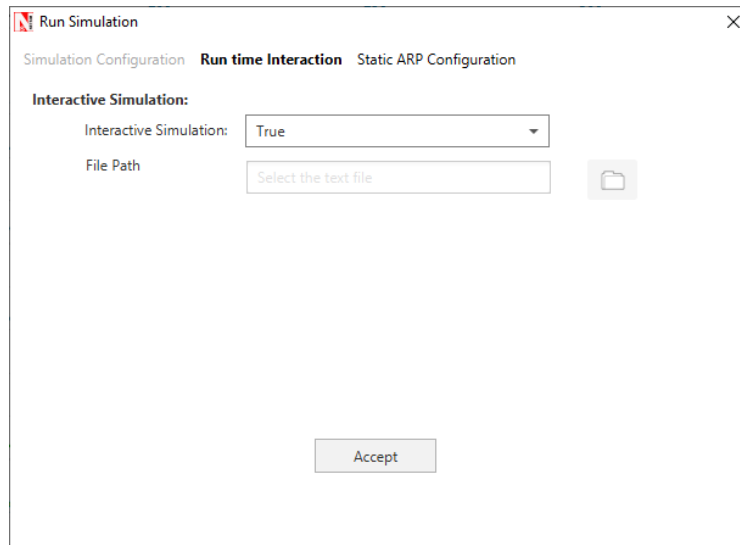
Link Properties (Adhoc Link 1)

Channel Characteristics – Path Loss only
Path Loss model – LOG DISTANCE
Path Loss Exponent- 2

3. Run the Simulation for 500sec.
4. Upon running simulations with this configuration, Route from source to destination as shown below:
 - a. Application 1: SENSOR_2(S)->SENSOR_13->SENSOR_3(D)
 - b. Application 2: SENSOR_12(S)->SENSOR_13->SENSOR_7(D)

Procedure to perform routing using python interface in NetSim:

- For the python interface to interact with NetSim during the simulation, Interactive Simulation parameters has to be set to 'True' under the Real-Time Interaction tab, before running the simulation.



- This lets the NetSimCore.exe (server) to wait for the client (Python script) to connect using the socket port. After the connection is established, we compute the routes based on our custom MFR protocol. These routes are passed as static routes to the NetSimCore.exe server by the python script.
- Run simulation for 500 seconds. NetSim Simulation Console starts and waits for client application to connect as shown below:

```

Select C:\Users\Ranveer\Documents\Workspace_MFR_LAR\bin\bin_x64\NetSimCore.exe
Heartbeat status = 0 (0 indicates successful)
+-[33m-[1m
*****
WARNING:
Detected a change in following:
libApplication.dll
This message is normally shown if users link their own code to NetSim.
*****
Press any key to continue...
+-[0mNetworkStack loaded from path- C:\Users\Ranveer\Documents\Workspace_MFR_LAR\bin\bin_x64\NetworkStack.dll
***
NetSim start
Network Stack loaded
Error in creating C:\Users\Ranveer\AppData\Local\Temp\NetSim\std12.2.26_x64\log directory. Error number 17
Initializing simulation
Config file reading complete
License re-validation complete
Protocol binaries loaded
Stack variables initialized
Could Not Find C:\Users\Ranveer\AppData\Local\Temp\NetSim\std12.2.26_x64\Plot_*
Metrics variables initialized

Apppath: C:\Users\Ranveer\Documents\Workspace_MFR_LAR\bin\bin_x64\Protocol variables initialized
Executing command --- DEL "C:\Users\Ranveer\AppData\Local\Temp\NetSim\std12.2.26_x64\*.pcap"
Could Not Find C:\Users\Ranveer\AppData\Local\Temp\NetSim\std12.2.26_x64\*.pcap
Emulation is disabled
NetSim Console Mode is enabled.
Waiting for first client to connect. Press ctrl+c to stop connection.

```

- The MFR protocol and socket client code to connect to NetSimCore.exe is written in **mfrProtocol.py**.
- Open Command Prompt in the directory where the python codes are present and run the command python **mfrProtocol.py**

```

Select C:\Windows\System32\cmd.exe
D:\AE_Workspace\file_exchahge_v13\Workspace_MFR_LAR\bin\bin_x64>python mfrProtocol.py

```

- Python interface interacts with NetSim Simulation and routes the packets from source to destination based on MFR protocol.

```

C:\Windows\System32\cmd.exe
Microsoft Windows [Version 10.0.19041.804]
(c) 2020 Microsoft Corporation. All rights reserved.

D:\AE_Workspace\file_exchahge_v13\Workspace_MFR_LAR\bin\bin_x64>python mfrProtocol.py
['SENSOR_2', 'SENSOR_13', 'SENSOR_3']
Socket successfully created.
Connection established to NetSim.
Received: Input is validated
Sending command to client device 2
OK!
__continue__
Socket successfully created.
Connection established to NetSim.
Received: Input is validated
Sending command to client device 13
OK!
__continue__
Socket successfully created.
Connection established to NetSim.
Received: Input is validated
Sending command to client device 3
OK!
__continue__
['SENSOR_12', 'SENSOR_13', 'SENSOR_7']
Socket successfully created.
Connection established to NetSim.
Received: Input is validated
Sending command to client device 12
OK!
__continue__

```

- Simulation continues and packets are routed from source to destination based on MFR protocol as shown below:
 - Application 1: SENSOR_2(S)->SENSOR_13->SENSOR_3(D)
 - Application 2: SENSOR_12(S)->SENSOR_13->SENSOR_7(D)

Analyzing the device route tables in NetSim Results Dashboard

- NetSim Results Window contains route tables for each device from which we can identify the routes updated by the python interface as per MFR protocol. Since the route that is formed is from SENSOR_2(S) -> SENSOR_13 -> SENSOR_3(D), route entries for packets with destination 11.1.1.3 are added in the nodes SENSOR_2, SENSOR_13, and SENSOR_3 to forward packets to SENSOR_13 and SENSOR_3 respectively. In the nodes SENSOR_2, SENSOR_13, and SENSOR_3 static route entries added based on MFR protocol by the python socket program can be found as shown below:

SENSOR_2_Table						
SENSOR_2						
<input checked="" type="checkbox"/> Detailed View						
Network Destination	Netmask/Prefix len	Gateway	Interface	Metrics	Type	
11.1.1.3	255.255.255.255	11.1.1.13	11.1.1.2	1	STATIC	
11.1.0.0	255.255.0.0	on-link	11.1.1.2	300	LOCAL	
224.0.0.1	255.255.255.255	on-link	11.1.1.2	306	MULTICAST	
224.0.0.0	240.0.0.0	on-link	11.1.1.2	306	MULTICAST	
255.255.255.255	255.255.255.255	on-link	11.1.1.2	999	BROADCAST	
0.0.0.0	0.0.0.0	11.1.1.1	11.1.1.2	999	DEFAULT	

The static route entry for SENSOR_2 specifies the next hop as SENSOR_13 which has the IP 11.1.1.13.

Network Destination	Netmask/Prefix len	Gateway	Interface	Metrics	Type
11.1.1.7	255.255.255.255	11.1.1.7	11.1.1.13	1	STATIC
11.1.1.3	255.255.255.255	11.1.1.3	11.1.1.13	1	STATIC
11.1.0.0	255.255.0.0	on-link	11.1.1.13	300	LOCAL
224.0.0.1	255.255.255.255	on-link	11.1.1.13	306	MULTICAST
224.0.0.0	240.0.0.0	on-link	11.1.1.13	306	MULTICAST
255.255.255.255	255.255.255.255	on-link	11.1.1.13	999	BROADCAST
0.0.0.0	0.0.0.0	11.1.1.1	11.1.1.13	999	DEFAULT

The static route entry for SENSOR_13 specifies the next hop as the destination node SENSOR_3 which has the IP 11.1.1.3.

Using NetSim Packet Trace to identify the route taken by packets from the source to the destination:

NetSim Packet trace log file can be obtained by enabling the packet trace option in NetSim GUI before running the simulation.

Upon running simulation with packet trace enabled, the packet trace log file can be accessed from the NetSim Results Window using the Open Packet Trace link.

Once the packet trace log file is loaded you can filter a specific packet id in the PACKET_ID column to view the path that the packet has taken.

Upon filtering Packet with id 4 we can observe the following in the packet trace:

PACKET_ID	SEGMENT_ID	PACKET_TYPE	CONTROL_PACKET_TYPE/APP_NAME	SOURCE_ID	DESTINATION_ID	TRANSMITTER_ID	RECEIVER_ID
4	0	Sensing	App1_SENSOR_APP	SENSOR-2	SENSOR-3	SENSOR-2	SENSOR-13
4	0	Sensing	App1_SENSOR_APP	SENSOR-2	SENSOR-3	SENSOR-13	SENSOR-3

Result

Case 1: Without SDN

Application Id	Application Name	Packet generated	Packet received	Throughput (Mbps)	Delay(microsec)	Jitter(microsec)
1	App1_SENSOR_APP	500	508	0.000406	28775.301575	18859.522288
2	App2_SENSOR_APP	500	505	0.000404	28520.851089	22156.538889

Case 2: With SDN

Application_Metrics_Table							
Application_Metrics							<input type="checkbox"/> Detailed View
Application Id	Application Name	Packet generated	Packet received	Throughput (Mbps)	Delay(microsec)	Jitter(microsec)	
1	App1_SENSOR_APP	500	511	0.000409	28247.518591	17951.142353	
2	App2_SENSOR_APP	500	520	0.000416	22616.147692	18274.494798	

You can see from the Application_Metric table that in case 2, for creating route path the delay is less as compared in case 1.